



**NINA MASON PULLIAM**  
CHARITABLE TRUST

Building a Legacy of Community  
Grantmaking since 1998



ANNUAL REPORT 2010

ANNUAL REPORT 2010

*Grantmaking since 1998  
Building a legacy of Community*

CHARITABLE TRUST  
**NINA MASON PULLIAM**



# Annual Report 2010



HELPING PEOPLE IN NEED  
PROTECTING ANIMALS AND NATURE  
ENRICHING COMMUNITY LIFE



NINA MASON PULLIAM  
CHARITABLE TRUST

Building a Legacy of Community  
Grantmaking since 1998



Grantmaking since 1998  
Building a legacy of Community

CHARITABLE TRUST  
NINA MASON PULLIAM



## TABLE OF CONTENTS

3	Trustees' Letter
4	President's Report
5	Making a Difference in Difficult Times Indianapolis
6	Making a Difference in Difficult Times Phoenix
7	Nina Mason Pulliam Legacy Scholars
8	Program Areas
9 – 15	Helping People In Need Grants
16 – 17	Protecting Animals And Nature Grants
18	Enriching Community Life Grants
19	Unaudited Financial Highlights
20	Nina Mason Pulliam
21	Staff Roster



We are once again pleased to introduce this annual report, the 13th since the Trust began awarding grants in the fall of 1998. During the Trust's short lifetime, our nation has experienced two significant economic downturns, most recently the Great Recession, which the state governments and residents of Arizona and Indiana are still battling. However, we write to you now in a much more optimistic frame of mind than a year ago because the Nina Mason Pulliam Charitable Trust realized notable achievements in 2010.

As most readers know, the source of the Trust's grant dollars is earned income and appreciation on its endowment investments. We are pleased to report in 2010, the Trust's


investment portfolio returned outstanding results of 13.5 percent growth, which is 4.5 percentage points above its targeted rate of return. After distributed grants and operating expenses of \$16.4 million as of December 31, 2010, the Trust's assets were \$354 million, compared to \$327 million a year earlier. Building upon 2009's investment gains of approximately 24 percent, the Trust's investment portfolio is well on its way to returning to more than \$400 million, where it was before the Great Recession began in late 2007. While we cannot expect the Trust's investments to realize double-digit returns annually, we are confident that the investment policies in place for the past several years will continue to mitigate volatility and be

defensive when the investment markets are in a downward trend.

Accordingly after two years of reductions, the Trust's annual grants budget is recovering. We believe that the grants strategies the Trust enacted over the past two years were very effective in shoring up front-line organizations providing essential services to the most vulnerable families and individuals. We are confident that the Trust's actions reflected what Nina Mason Pulliam would have done in such a time of economic crisis.

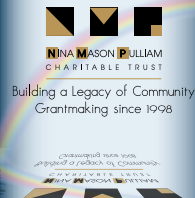
Moving forward as the economies of Arizona and Indiana improve, we will continue to respect Mrs. Pulliam's values as we seek ways to enhance the long-term effectiveness of initiatives that assist people in achieving their full potential. This will be in addition to maintaining the Nina Scholars program as it has strongly demonstrated its value over its 10-year lifetime. The Trust also will continue to fulfill its mission of protecting animals and nature and supporting opportunities that expand participation for all to share in the cultural and civic vitalities of metropolitan Indianapolis and Phoenix.

We thank you for your ongoing interest in the activities of the Trust and hope that this report provides you with a deeper awareness of the breadth and scope of its work.

  
Frank E. Russell  
Trustee and Chairman

  
Nancy M. Russell  
Trustee

  
Carol Peden Schilling  
Trustee



*Harriet M. Ivey, pictured center, with members of the Trust management team. Left to right: Michael R. Twyman, Ph.D., director of grants programs, Indiana; Robert L. Lowry, CPA, CFA, executive vice president and chief financial officer; Mary K. Price, director of grants administration and secretary to the board of Trustees; Edmund H. Portnoy, Ph.D., director of grants programs, Arizona.*

I am pleased to report that in 2010 the Nina Mason Pulliam Charitable Trust succeeded in meeting extraordinary challenges to do more with less with its \$11.5 million grants distribution budget, the lowest since the Trust's first full year of grantmaking in 1999.

Funding collaborations in both Indianapolis and Phoenix allowed us to expand the number of individuals and families who received assistance for basic necessities. We increased the number of operating support grants for human and youth service organizations that experienced serious funding cutbacks from government and private sources. These grants, along with difficult budget and staff reduction decisions that many Trust grantees had to make, were critical to helping these organizations maintain their service commitments. As a result,

all but a few of the Trust's Helping People in Need grantees were able to maintain their core services to children, youth and families, the elderly and the disabled. (Two Arizona organizations merged their programs into larger entities.) Some organizations, such as food banks, managed to increase their efforts during a very difficult year, when financial donations were down and requests for assistance were up.

The Nina Scholars program continued to flourish, welcoming its 10th cohort of students and celebrating 35 new graduates for a total of 153 since the program began. As 2010 progressed, we also made grant investments in programs working in new ways to assist individuals and families over longer time horizons to achieve financial stability and self-sufficiency. Using the knowledge gained from the Nina Scholars program over the past

10 years, we anticipate expanding the Trust's involvement in such efforts as the economy continues to strengthen in 2011 and beyond.

In other areas of interest, the Trust continued to expand its environmental grants portfolio with projects working to solve deeply complex problems threatening the desert and forest habitats of Arizona. In Indiana several organizations are using Trust grants to educate citizens about changing habits that are threatening the state's source of fresh water from its streams and rivers. In both states, grants that involve youth learning how to live in harmony with nature continued to be a priority. Through a variety of creative programs and collaborations, the Trust's animal welfare grantees demonstrated success in reducing the feral cat population, expanding affordable spay/neuter services available to lower-income pet owners and providing care and treatment of abandoned animals, including those left behind in foreclosed houses.

The reports that follow from my colleagues - the directors of grants programs for Indiana and Arizona - provide specific examples of outstanding grantee performance.

In conclusion, we completed 2010 with renewed optimism and growing confidence that the Trust's grants are making significant contributions to the quality of life in our communities of interest. With grant resources growing again, we intend to build upon the lessons learned from the past two exceptionally challenging years to enhance the impact of the Trust's grantmaking.

Harriet M. Ivey  
President and Chief Executive Officer

# Making a Difference in Difficult Times



## TAKING ACTION FOR A STRONGER TOMORROW

### INDIANAPOLIS



Whereas, the recent economic recession has been kinder to Indiana than some other states of comparable population size, it has still wreaked havoc on many vulnerable individuals and families forced to live in the margins with limited resources. This rings true even in Indianapolis (Marion County) where the unemployment rate remains lower than the national average. Persons without a steady job and who lack post-secondary education remain at the greatest risk for losing housing, health care benefits and other vital supports necessary for maintaining self-sufficiency.

The Trust intentionally deployed a considerable share of its grant resources to those organizations that assist these fragile members of our community. Fortunately, central Indiana possesses a strong human service delivery system, coupled with an expansive and generous philanthropic sector, to help buffer the impact that a dismal economy can have on a thriving city. To that end, the Trust was pleased to join forces again with other local foundations of the **Community Economic Relief Fund (CERF)** by giving financial support that totaled over a half million dollars this year. During a two-year period, CERF has benefited more than 100,000 households by offering employment, housing, utilities, food, transportation and child care assistance. Many of the persons assisted were those seeking relief for a first time from front-line agencies. The safety net created from collaborative funding mitigated the pressures that many local agencies faced with increased client demand and diminished capacity.

We were also able to respond quickly to organizations that experienced unforeseen crises that threatened their ability to fulfill their missions. A few examples include a grant to **Gleaners Food Bank of Indiana** to relocate its food rescue program while it transitioned to its new and expanded warehouse facility; support to **Planned Parenthood of Indiana** to continue assisting clients at its health care centers following the loss of significant federal funding; partnering with **Connect2Help** to enhance caller services and increase awareness of options for domestic violence victims; as well as providing scholarship subsidies for **St. Mary Child's Care Center** to operate a preschool classroom that was in danger of closing due to cuts in the state budget for Child Care Fund vouchers. Another illustration is the grant to **St. Vincent de Paul** to replace air conditioning units for its pantry facility caused by vandalism. The agency serves more than 3,000 households weekly at this eastside location with a volunteer staff.

Although our emphasis has been primarily on our Helping People in Need program area, we have managed to be responsive to compelling environmental requests in the Protecting Animals and Nature program area, including helping to expand the work of land trusts in the state, assisting with broad-based community planning efforts to benefit the environment, and promoting policy changes that improve water quality. Despite the Trust having its smallest grants budget since 1999, we have also made worthwhile investments in our Enriching Community Life program area with the commitment to creating access to arts, cultural and civic amenities for underserved populations. In retrospect, we have truly done more with less!

Michael R. Twyman, Ph.D.  
Director of Grants Programs, Indiana

# Making a Difference in Difficult Times



## TAKING ACTION FOR A STRONGER TOMORROW

### PHOENIX



Grantmaking in 2010 reflected our responsiveness to emergency needs, commitment to programs that build self-sufficiency, and a deepening commitment to protecting the environment. Building on the successful emergency funding collaborative in 2009, the Trust joined 10 other funders in 2010 to support agencies providing essential services. Grants supported emergency food boxes and daily meals and ensured emergency and transitional housing for the homeless and victims of domestic violence. Collaborative funding is proving to be an effective tool in meeting the emergency operating needs of safety-net organizations.

Other grants in 2010 demonstrate our attention to promoting independence and skill development. Grants to **Catholic Charities Community Services** and **Open Table** supported clients' ability to build resources necessary to move beyond crisis and poverty towards stability and independence. **Literacy Volunteers of Maricopa County** received funds to provide accelerated GED training and workforce transition programs to unemployed students, and our grant to **Southwest Autism Research and Resource Center** supported work skill development for individuals diagnosed with autism spectrum disorder.

The Trust also continued its commitment to youth, investing in programs with the potential to change lives. Grants supported the **Valley of the Sun YMCA's** programs for high school dropouts to earn a diploma or

GED. **College Depot Program at the Burton Barr Central Library** provides youth and adults with college planning information, and our grant to the **Phoenix Children's Hospital Foundation** expanded the Teen Tot Clinic to teach parenting skills to young mothers.

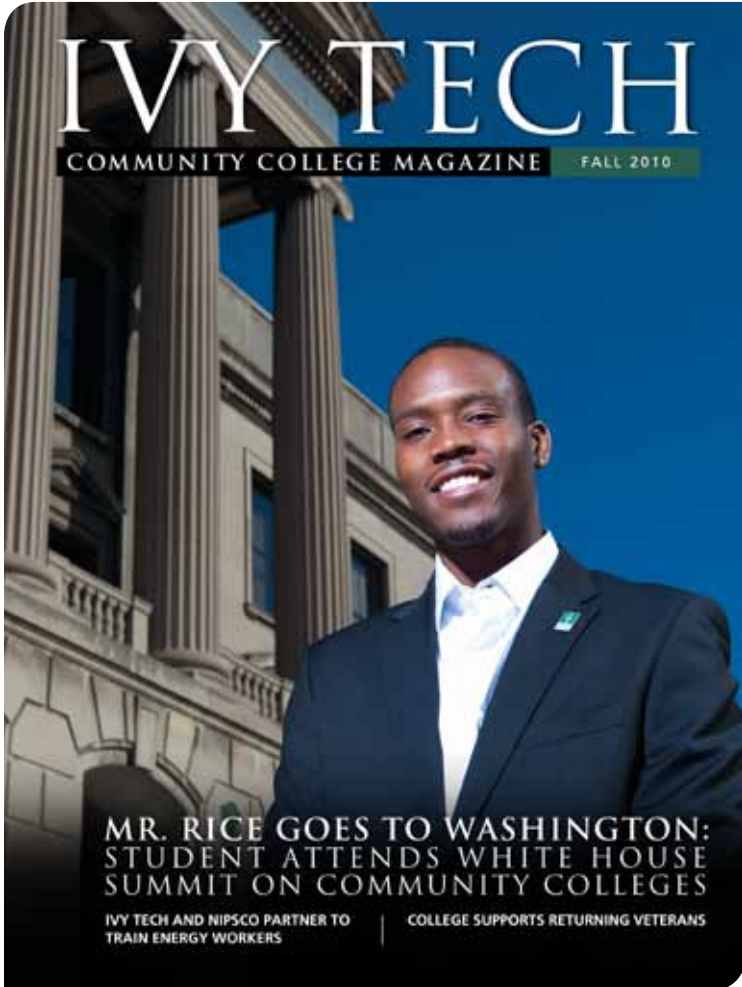
In the Protecting Animals and Nature category, the Trust continued its work and partnership with the conservation community and provided targeted investments in critical areas such as water and wilderness protection. Grants to the **Arizona Land and Water Trust** for its water conservation program and **Grand Canyon Trust** for The Four Forest Restoration Initiative provide creative economic balance to environmental protection. We also started new partnerships with **The Wilderness Society**, **McDowell Sonoran Conservancy** and **Conservation Lands Foundation** in support of their large landscape and wilderness protection work in Arizona. Continuing our efforts in environmental education, the Trust provided support to the **Arizona-Sonora Desert Museum**, **Audubon Arizona** and **Arizona Association for Environmental Education** for work with school-age youth.

As we move forward, we will continue to build on our collaborative efforts, support programs that help individuals reach their potential and respond to the emergency needs of our community. We will also continue our investments in protecting the environment and animals. In combination, we will continue to pay tribute to the legacy of Mrs. Pulliam.

Edmund H. Portnoy, Ph.D.  
Director of Grants Programs, Arizona



**ARIZONA STATE UNIVERSITY | MARICOPA COMMUNITY COLLEGES**  
**INDIANA UNIVERSITY PURDUE UNIVERSITY INDIANAPOLIS | IVY TECH COMMUNITY COLLEGE - CENTRAL INDIANA**



degrees and those studying at the two universities have up to six years to complete bachelor degrees. A significant number of Nina Scholars have gone on to graduate studies in education, law, medicine, nursing, physics and social work.

Of special note this past year, Michael Rice, an 8th cohort Ivy Tech Nina Scholar, participated in the White House Symposium on Community Colleges. Michael was one of only 10 current community college students that the White House selected to take part in and address the gathering. ASU Nina Scholar graduate Rebekah Theisen received a National Science Foundation Graduate Fellowship, valued at more than \$100,000, to pursue her doctoral studies in physics at ASU.

Adults age 25 or older with dependents, who have had no previous or little college experience; youth raised in the foster care system; and physically disabled youth and adults are eligible to apply. You can find more information about the program on the Trust's website under the Nina Scholars program tab.

The Nina Scholars program continued to deliver impressive results in 2010. For the academic year beginning in August, the 10th cohort of 25 new Nina Scholars joined the 134 continuing Nina Scholars at Arizona State University, Maricopa Community Colleges, Indiana University Purdue University Indianapolis (IUPUI) and Ivy Tech Community College - Central Indiana in Indianapolis. Thirty-five Nina Scholars graduated in 2010. Since the program began with the 2001-2002 academic year, 153 students have graduated.

Nina Scholars graduation rates significantly continue to exceed those of the entire student body at the four participating schools. The average percent of Nina Scholars graduating or continuing their studies within the allotted scholarship period is 65 percent. Nina Scholars at the two participating community colleges have four years to complete associate



Rebekah Theisen celebrates graduation with fellow Nina Scholar Terry Jones.

# Program Areas



## MAKING A DIFFERENCE

The Nina Mason Pulliam Charitable Trust provides grants that focus on the areas of service Nina Pulliam supported during her lifetime:

### HELPING PEOPLE IN NEED

**Basic Needs** – The Trust supports organizations and programs that serve those who are without sufficient food, clothing, shelter, medical care and other necessities of life.

**Elderly Persons** – The Trust supports organizations and programs that assist elderly adults and preserve their mental and physical well-being and independence.

**Physically and Developmentally Disabled Adults and Children** – The Trust supports organizations and programs that provide services for people with physical and developmental disabilities.

**Women, Children, Youth and Families** – The Trust supports organizations and programs that improve the well-being of and future opportunities for children, youth and their families. This also includes programs that provide health and educational services.

### PROTECTING ANIMALS AND NATURE

**Animal Welfare** – The Trust supports organizations and programs that strengthen community bonds and provide humane services for domestic

animals, including shelters and veterinarian and adoption services. It also supports organizations providing rescue, veterinary care and reintroduction of native wildlife.

**Botanical Gardens and Zoos** – The Trust supports organizations and programs that provide education and recreation opportunities for the community and that protect the diversity of animals and their habitats.

**Environment** – The Trust supports organizations and programs that provide conservation, protection and restoration of wildlife and its habitats, as well as education and public awareness to promote environmental stewardship.

### ENRICHING COMMUNITY LIFE

**Arts and Culture** – The Trust supports arts and cultural organizations whose programs are primarily for children and adults who also are most likely to be served by the Trust’s “Helping People in Need” program area.

**Community Building and Civic Revitalization** – The Trust supports organizations and programs that assist neighborhoods in decline, as well as those that enhance the quality of life in the Trust’s priority communities of Indianapolis and Phoenix.

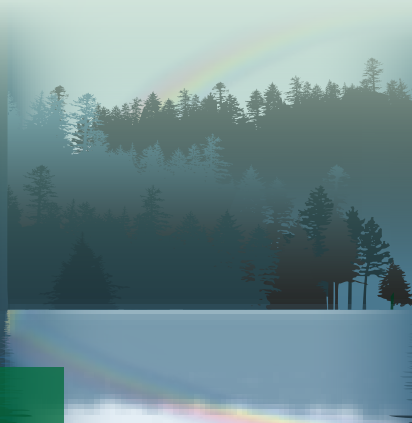
## 2010 Grants Awarded by Program Area

80%



**Helping People In Need**  
**\$8,778,991**

17%



**Protecting Animals and Nature**  
**\$1,879,500**

3%



**Enriching Community Life**  
**\$365,000**



ORGANIZATION NAME GRANT DESCRIPTION	GRANT AWARDED
--	---------------

<b>100 Black Men of Indianapolis, Inc.</b> <i>Indianapolis, IN</i>	\$95,000
---	----------

Support over two years to expand the Team Mentoring program to 140 fourth-grade male students at five IPS schools.

<b>*100 Club Of Arizona</b> <i>Phoenix, AZ</i>	5,000
---	-------

Support of the Jason Schechterle Scholarship Fund to assist families of injured public safety officers and firefighters.

<b>About Care, Inc.</b> <i>Chandler, AZ</i>	45,000
--	--------

Support to deliver services to elderly and disabled adults in Chandler and Gilbert.

<b>Agape Therapeutic Riding Resources, Inc.</b> <i>Cicero, IN</i>	25,000
--	--------

Support for the Agape Literacy Program to encourage 440 first- and second-grade students to develop an appreciation for reading and learning through interaction with horses.

<b>*Alliance of Arizona Nonprofits</b> <i>Phoenix, AZ</i>	35,000
--	--------

Support to increase organizational capacity, collaboration and resource development of Arizona's nonprofit organizations.

<b>American Red Cross Grand Canyon Chapter</b> <i>Phoenix, AZ</i>	10,000
--	--------

Support to provide food and shelter to residents in northern Arizona affected by the severe winter storms in January 2010.

<b>Area Agency on Aging, Region One, Inc.</b> <i>Phoenix, AZ</i>	75,000
---	--------

Support for the DOVES program to provide transitional housing for victims of domestic violence over age 50 in Maricopa County.

<b>Arizona Community Foundation</b> <i>Phoenix, AZ</i>	10,000
---	--------

Support for the Navajo-Hopi Storm Relief Fund to provide food and blankets to residents of Apache, Coconino and Navajo counties affected by the severe winter storms in January 2010.

<b>*Arizona Dental Foundation</b> <i>Phoenix, AZ</i>	30,000
---	--------

Support to train 30 to 50 dentists to treat individuals with physical, mental and/or developmental disabilities in Maricopa County.

<b>Arizona Friends of Foster Children Foundation</b> <i>Glendale, AZ</i>	20,000
---	--------

Support for the holiday gifts program.

<b>Arizona State University Foundation</b> <i>Tempe, AZ</i>	540,510
--	---------

Support for the Nina Mason Pulliam Legacy Scholars program.

ORGANIZATION NAME GRANT DESCRIPTION	GRANT AWARDED
--	---------------

<b>*Arizonans for the Protection of Exploited Children and Adults</b> <i>Goodyear, AZ</i>	\$40,000
--	----------

Support to complete construction of Natalie's House, an eight bed, residential facility for girls, ages 11 to 17, recovering from sexual exploitation and abuse.

<b>*Asian Help Services</b> <i>Indianapolis, IN</i>	20,000
--	--------

Support to provide basic health care services to 100 additional Chin and Burmese refugee clients settling in Indianapolis.

<b>Asian Pacific Community in Action</b> <i>Phoenix, AZ</i>	63,000
--	--------

Support to establish the Asian Pacific Health Language Access Program and train 30 bilingual individuals in medical interpretation.

<b>Aspire Indiana Behavioral Health System</b> <i>Noblesville, IN</i>	50,000
--	--------

Support for the Projects for Assistance in Transition from Homelessness Program to assist 100 homeless individuals and those at risk of homelessness who have mental health problems.

<b>Assistance League of East Valley</b> <i>Chandler, AZ</i>	5,000
--	-------

Support for Operation School Bell to provide school clothing and supplies to kindergarten through sixth-grade students from low-income families.

<b>Assistance League of Indianapolis, Inc.</b> <i>Indianapolis, IN</i>	25,000
---	--------

Support for Operation School Bell to provide school clothing and supplies to 2,900 preschool and elementary school children from low-income families.

<b>Assistance League of Phoenix</b> <i>Phoenix, AZ</i>	20,000
---	--------

Support for Operation School Bell to provide school clothing and supplies to preschool and elementary school children from low-income families.

<b>Association of Arizona Food Banks, Inc.</b> <i>Phoenix, AZ</i>	30,000
--	--------

Support for the Let's Talk Turkey program for five primary area food banks serving Maricopa County.

<b>Avondale Community Action Program</b> <i>Avondale, AZ</i>	6,650
---	-------

Support to provide low-income families and individuals with assistance during the holiday season.

<b>Back-To-School Clothing Drive Association</b> <i>Glendale, AZ</i>	20,000
---	--------

Support to provide school clothing and supplies to students from low-income families in Phoenix-area school districts.





ORGANIZATION NAME GRANT DESCRIPTION	GRANT AWARDED
<b>Damien Center, Inc.</b> <i>Indianapolis, IN</i> Support to assist 130 individuals living with HIV/AIDS to obtain employment and long-term housing.	\$63,000
<b>Dayspring Center, Inc.</b> <i>Indianapolis, IN</i> Support to provide emergency shelter, outreach and food programs to 150 families annually.	25,000
<b>*District Medical Group</b> <i>Phoenix, AZ</i> Support to maintain and expand domestic violence services to 3,600 patients and provide domestic violence training to medical students at The Center for Healthcare Against Domestic Violence, part of the Maricopa County Medical Center.	80,000
<b>D.R.E.A.M. Alive, Inc.</b> <i>Carmel, IN</i> Support over two years to continue and develop after school programming at Shortridge Magnet School for Law and Public Policy for 30 students ages 12 to 16.	60,000
<b>Dress for Success Indianapolis</b> <i>Indianapolis, IN</i> Support to expand the agency's career development and job retention services to 300 additional women seeking employment.	40,000
<b>*Dress for Success Phoenix</b> <i>Phoenix, AZ</i> Support to assist over 700 low-income women in Maricopa County find employment by providing them with interview- and work-appropriate clothing.	80,000
<b>Duet</b> <i>Phoenix, AZ</i> Support for the Computer Assistance Program to provide computers, technical support, Internet connections and training to nearly 250 homebound seniors.	40,000
<b>The EAR Foundation of Arizona</b> <i>Phoenix, AZ</i> Support for the HEAR for Kids program to purchase hearing aids for children, birth to age 18, from low-income families.	64,000
<b>Eight, Arizona PBS at Arizona State University</b> <i>Phoenix, AZ</i> Support for a third year for Ready To Learn, a community-based early literacy program that annually provides free workshops, children's books and PBS magazines to over 990 parents and caregivers to prepare children for school in Maricopa County.	25,000
<b>Exodus Refugee Immigration, Inc.</b> <i>Indianapolis, IN</i> Support for a second year to resettle at least 400 refugees in the Indianapolis area as they flee from social and political oppression.	65,000

ORGANIZATION NAME GRANT DESCRIPTION	GRANT AWARDED
<b>First United Methodist Church of Tempe</b> <i>Tempe, AZ</i> Support for the Urban Outreach Program to provide food, showers, clothing, shelter and counseling assistance to approximately 1,000 homeless individuals in Tempe.	\$70,000
<b>Forest Manor Multi-Service Center, Inc.</b> <i>Indianapolis, IN</i> Support to start a new Respect is Mutual Mentoring Program at Arlington Community School to provide 50 youth meaningful alternatives to gang lifestyles.	50,000
<b>*Gay, Lesbian and Straight Education Network</b> <i>Phoenix, AZ</i> Support to provide workshops to educate students and teachers on lesbian, gay, bi-sexual and transgender issues, and develop gay-straight alliance student clubs.	45,000
<b>Gila Bend Community Action Program</b> <i>Gila Bend, AZ</i> Support to provide low-income families and individuals with assistance during the holiday season.	6,650
<b>Girls Ranch, Inc. of Arizona</b> <i>Phoenix, AZ</i> Support to provide assistance to resident teen parents and their children during the holiday season.	2,400
<b>Gleaners Food Bank of Indiana, Inc.</b> <i>Indianapolis, IN</i> Support to customize a 20,000-square-foot space in the new building to relocate the food rescue program and to purchase a bar code scanning system.	100,000
<b>Glendale Community Action Program</b> <i>Glendale, AZ</i> Support to provide low-income families and individuals with assistance during the holiday season.	6,650
<b>Greater Phoenix Youth at Risk, Inc.</b> <i>Phoenix, AZ</i> Support for the Positive Adult Leaders in Society program to provide mentoring services for approximately 165 homeless children, ages 5 to 15, living with their families in transitional shelters.	40,000
<b>Guadalupe Community Action Program</b> <i>Guadalupe, AZ</i> Support to provide low-income families and individuals with assistance during the holiday season.	6,650
<b>Handi-Capable Hands, Inc.</b> <i>Indianapolis, IN</i> Support for a second year of the HAND program to provide 50 developmentally disabled individuals with a supportive employment program.	37,500

\*Represents first-time grant recipients.





ORGANIZATION NAME GRANT DESCRIPTION	GRANT AWARDED
--	---------------

<b>Local Initiatives Support Corporation</b> <i>Indianapolis, IN</i>	\$50,000
---	----------

Support to expand services to the Centers for Working Families at the Hawthorne Community Center, John H. Boner Community Center, Mary Rigg Neighborhood Center and Southeast Community Services.

<b>John F. Long Family Services Center</b> <i>Phoenix, AZ</i>	7,600
--	-------

Support to provide low-income families and individuals with assistance during the holiday season.

<b>Maggie's Place, Inc.</b> <i>Phoenix, AZ</i>	40,000
---	--------

Support for housing and related services for pregnant and parenting young women and their infants at three group homes.

<b>Maricopa Community Colleges Foundation</b> <i>Tempe, AZ</i>	140,457
---	---------

Support for the Nina Mason Pulliam Legacy Scholars program.

<b>Edna Martin Christian Center</b> <i>Indianapolis, IN</i>	150,000
--	---------

Support over two years for year-round support services to families and children in the Martindale-Brightwood neighborhood and to develop a partnership with Martin University's NASA lab.

<b>Mission of Mercy</b> <i>Phoenix, AZ</i>	85,000
---	--------

Support to launch a fifth medical site in Avondale and Goodyear to increase mobile medical services and provide 4,000 patient visits to uninsured and underinsured individuals.

<b>*Mt. Carmel Community Life Center</b> <i>Indianapolis, IN</i>	50,000
---	--------

Support for the Community Life Center for staff, sports equipment and program supplies on the far east side of Indianapolis.

<b>*My Sister My Friend</b> <i>Phoenix, AZ</i>	50,000
---	--------

Support for facility improvements to support the distribution of over 57,000 food boxes and 120,000 meals to low-income families in the Phoenix area.

<b>NAMI Indianapolis, Inc.</b> <i>Indianapolis, IN</i>	30,000
---	--------

Support for education and advocacy services for individuals living with mental illness, their families and friends, and the community.

<b>National Advocacy &amp; Training Network</b> <i>Phoenix, AZ</i>	33,000
---	--------

Support for a third year for the SEEDs program to provide services for women who are fleeing domestic violence and recovering from substance abuse.

ORGANIZATION NAME GRANT DESCRIPTION	GRANT AWARDED
--	---------------

<b>Native American Connections</b> <i>Phoenix, AZ</i>	\$45,000
--	----------

Support for the Affordable Supportive Housing Program to assist 45 formerly homeless and low-income families residing at the agency's six permanent housing communities.

<b>A New Leaf</b> <i>Mesa, AZ</i>	6,650
--------------------------------------	-------

Support to provide low-income families and individuals with assistance during the holiday season.

<b>Open Table</b> <i>Phoenix, AZ</i>	50,000
---	--------

Support to assist Phoenix faith-based congregations develop and train volunteer support groups to assist low-income individuals and families to eliminate barriers to housing, education and employment.

<b>Outreach, Inc.</b> <i>Indianapolis, IN</i>	76,000
--	--------

Support over two years for the G.O.A.L. program to assist at least 100 Marion County homeless high school students obtain their diplomas or GEDs and build their self-sufficiency skills.

<b>Peoria Community Action Program</b> <i>Peoria, AZ</i>	6,650
---	-------

Support to provide low-income families and individuals with assistance during the holiday season.

<b>Phoenix Children's Hospital Foundation</b> <i>Phoenix, AZ</i>	129,000
---	---------

Support to expand services of the Teen Tot Clinic to an additional 250 adolescent families in south central Phoenix to decrease repeat teen pregnancy rates and teach parenting skills.

<b>Phoenix Rescue Mission</b> <i>Phoenix, AZ</i>	15,000
---	--------

Support for meal services, food boxes and shelter programs during the holiday season.

<b>Planned Parenthood Arizona, Inc.</b> <i>Phoenix, AZ</i>	65,000
---	--------

Support to assess operations to increase efficiency in maintaining service to low-income clients.

<b>Planned Parenthood of Indiana, Inc.</b> <i>Indianapolis, IN</i>	150,000
---	---------

Support to provide healthcare services at Marion County clinic center sites.

<b>Reach for Youth, Inc.</b> <i>Indianapolis, IN</i>	40,000
---	--------

Support over two years to expand the Alternatives to Expulsion program to assist 60 school-age children in changing their behaviors and remain in school.



ORGANIZATION NAME GRANT DESCRIPTION	GRANT AWARDED
<b>*Ryan House</b> <i>Phoenix, AZ</i> Support to provide palliative and end-of-life care for children diagnosed with life-threatening conditions, and respite to over 300 Arizona families.	\$75,000
<b>St. Mary's Child Center</b> <i>Indianapolis, IN</i> Support to provide child care services for at least 30 children from low-income families.	50,000
<b>The Salvation Army, Indianapolis</b> <i>Indianapolis, IN</i> Support to provide shelter and services for low-income and at-risk women with children during the holiday season.	50,000
<b>The Salvation Army, Phoenix</b> <i>Phoenix, AZ</i> Support for the annual Christmas program, which distributes food, toys and gifts to low-income families and individuals.	50,000
<b>Save the Family Foundation of Arizona</b> <i>Mesa, AZ</i> Support for the Transitional Shelter project to provide housing support for homeless and working poor families with children in the east Valley.	100,000
<b>Season for Sharing</b> <i>Phoenix, AZ</i> Support for Season for Sharing, an annual holiday campaign to help health and human service agencies in Arizona.	50,000
<b>Second Starts, Inc.</b> <i>Indianapolis, IN</i> Support to purchase a cargo van to pick up and deliver donated household items to more than 600 formerly homeless families and individuals.	45,000
<b>Shepherd Community, Inc.</b> <i>Indianapolis, IN</i> Support for the Fellowship Program to utilize 47 college students and recent graduates in assisting staff while providing them with experiential internships.	60,000
<b>Society of St. Vincent de Paul</b> <i>Indianapolis, IN</i> Support for the food pantry that serves more than 3,000 shoppers weekly.	45,000
<b>Society of St. Vincent de Paul</b> <i>Phoenix, AZ</i> Support for the Family Assistance Program to provide one-time emergency financial assistance to families in jeopardy of losing their homes and becoming homeless.	100,000

ORGANIZATION NAME GRANT DESCRIPTION	GRANT AWARDED
<b>Southeast Community Services</b> <i>Indianapolis, IN</i> Support to assist 750 unemployed and underemployed individuals who are seeking jobs.	\$45,000
<b>Southwest Autism Research and Resource Center</b> <i>Phoenix, AZ</i> Support for the Culinary Works program to provide social, life and work skills for 95 individuals diagnosed with autism spectrum disorder.	45,000
<b>Southwest Human Development</b> <i>Phoenix, AZ</i> Support for the Kinship Care and Adoptions program to provide financial assistance to over 170 grandparents or other relatives caring for children removed from their homes due to abuse or neglect.	65,000
<b>Sun Sounds Foundation</b> <i>Tempe, AZ</i> Support to implement Sun Dial II, a telephone operated reading service that makes newspapers, radio broadcasts, web-streams and other print media available to 5,000 blind and visually impaired individuals primarily in Maricopa County.	69,000
<b>Sunnyslope Family Services Center</b> <i>Phoenix, AZ</i> Support to provide low-income families and individuals with assistance during the holiday season.	7,600
<b>Teachers' Treasures, Inc.</b> <i>Indianapolis, IN</i> Support for a program that provides donated school and office supplies to teachers working in schools with students from predominantly low-income families.	20,000
<b>Tempe Community Action Agency, Inc.</b> <i>Tempe, AZ</i> Support to provide low-income families and individuals with assistance during the holiday season.	6,650
<b>Tolleson Community Action Program</b> <i>Tolleson, AZ</i> Support to provide low-income families and individuals with assistance during the holiday season.	6,650
<b>Training, Inc.</b> <i>Indianapolis, IN</i> Support to assist 100 previous clients who have lost jobs due to the recession and are seeking additional training and job search help.	40,000

\*Represents first-time grant recipients.



ORGANIZATION NAME GRANT DESCRIPTION	GRANT AWARDED
--	---------------

<b>Trusted Mentors, Inc.</b> <i>Indianapolis, IN</i>	\$40,000
---	----------

Support to train 80 volunteers for the Mentoring for Long-Term Homeless Prevention and Mentoring for Successful Re-Entry Programs.

<b>UMOM New Day Centers, Inc.</b> <i>Phoenix, AZ</i>	100,000
---	---------

Support for the Childcare Program to provide a safe, stable and nurturing environment for children age 6 weeks through grade 5.

<b>United Christmas Service</b> <i>Indianapolis, IN</i>	50,000
--	--------

Support to provide low-income families and individuals with assistance during the holiday season.

<b>United Food Bank</b> <i>Mesa, AZ</i>	127,000
--	---------

Support to open a new warehouse facility to meet a 25 percent increase in demand for food distribution.

<b>United Senior Action Foundation</b> <i>Indianapolis, IN</i>	25,000
---	--------

Support to provide family caregivers throughout Indiana with the most current long-term care resources and education about new models of nursing home care.

<b>United Way of Central Indiana</b> <i>Indianapolis, IN</i>	100,000
---	---------

Support for the 2010 annual campaign to assist with the funding of basic needs services.

<b>United Way of Central Indiana</b> <i>Indianapolis, IN</i>	507,350
---	---------

Support of the Community Economic Relief Fund, which provides direct financial assistance to community and neighborhood organizations that help those most in need.

<b>Unlimited Potential</b> <i>Phoenix, AZ</i>	35,000
--	--------

Support for the Abriendo Puertas (Opening Doors) program in the Roosevelt School District for parents and children, birth to age 5, to increase the level of parental involvement in children's education and improve their academic achievement and social skills.

<b>Valley of the Sun United Way</b> <i>Phoenix, AZ</i>	100,000
---	---------

Support for the 2010 annual campaign to assist with the funding of basic needs services.

<b>Valley of the Sun United Way</b> <i>Phoenix, AZ</i>	400,000
---	---------

Support for a Community Funding Collaborative to assist safety-net organizations in providing emergency food, housing and medical services.

ORGANIZATION NAME GRANT DESCRIPTION	GRANT AWARDED
--	---------------

<b>Valley of the Sun YMCA</b> <i>Phoenix, AZ</i>	\$25,000
---	----------

Support for the i-Learn education program to provide high school dropouts and other high-risk students an opportunity to earn a diploma or GED.

<b>Waste Not, Inc.</b> <i>Scottsdale, AZ</i>	50,000
---	--------

Support for a new refrigerated truck to pick up and deliver unused prepared food to shelters and other nonprofit human service organizations in metropolitan Phoenix.

<b>WellCare Foundation</b> <i>Phoenix, AZ</i>	50,000
--	--------

Support for a second year for the medical clinic at the Spencer D. & Mary Jane Stewart Boys & Girls Club in the west Valley to assist 480 low-income single mothers and their children.

<b>Wheeler Mission Ministries</b> <i>Indianapolis, IN</i>	50,000
--	--------

Support for a men's homeless shelter that provides medical care, a dental clinic, a reading room/day center and a clothing exchange.

<b>Wickenburg Community Action Program</b> <i>Wickenburg, AZ</i>	6,650
---	-------

Support to provide low-income families and individuals with assistance during the holiday season.

<b>Travis L. Williams Family Services Center</b> <i>Phoenix, AZ</i>	7,600
--	-------

Support to provide low-income families and individuals with assistance during the holiday season.

<b>Winter Assistance Fund</b> <i>Indianapolis, IN</i>	80,000
--	--------

Support to provide emergency utility assistance for low-income households.

<b>Summer Youth Program Fund</b> <i>Indianapolis, IN and Phoenix, AZ</i>	250,000
---	---------

Support to 39 organizations that provide academic enrichment, arts and recreational summer programs for children of low-income families.

<b>Employee Appreciation and Recognition Program Grants</b> <i>Indianapolis, IN and Phoenix, AZ</i>	3,000
--	-------

Support to four organizations whose missions or programs seek to help people in need.

<b>Helping People In Need</b>	<u>\$8,778,991</u>
-------------------------------	--------------------

ORGANIZATION NAME GRANT DESCRIPTION	GRANT AWARDED
<b>Arizona Association for Environmental Education</b> <i>Phoenix, AZ</i> Support for a second year to develop a formal environmental literacy plan and promote environmental education in kindergarten through grade 12 classrooms throughout Arizona.	\$75,000
<b>Arizona Land and Water Trust</b> <i>Tucson, AZ</i> Support for the Desert Rivers and Riparian Heritage Initiative to work with rural water users to conserve desert springs, rivers and aquifers in the Gila River Basin of eastern and central Arizona.	68,000
<b>Arizona Wilderness Coalition</b> <i>Tucson, AZ</i> Support for the Sonoran Desert Heritage Campaign to protect nearly one million acres of wilderness-quality public lands west and southwest of Phoenix.	45,000
<b>Arizona-Sonora Desert Museum</b> <i>Tucson, AZ</i> Support for It's Our Desert, an environmental education initiative for students in kindergarten through grade 12 that promotes understanding and protection of the Sonoran Desert ecosystem and its wildlife.	75,000
<b>Audubon Arizona</b> <i>Phoenix, AZ</i> Support for a second year to provide education, outreach and community programs at the Nina Mason Pulliam Rio Salado Audubon Center for more than 16,000 students and visitors.	100,000
<b>Central Indiana Land Trust, Inc.</b> <i>Indianapolis, IN</i> Support over two years to implement Greening the Crossroads: A Green Infrastructure Plan for central Indiana, which will protect 250,000 acres within a nine-county area.	200,000
<b>*Conservation Lands Foundation</b> <i>Durango, CO</i> Support to assist Friends groups to advocate for conservation and management of ecologically and culturally significant National Conservation Lands throughout Arizona, including national monuments and designated wilderness areas.	40,000
<b>The Conservation Law Center, Inc.</b> <i>Bloomington, IN</i> Support over two years to expand freshwater conservation work to high quality waters, including the Wabash and White Rivers in Indiana.	150,000
<b>Desert Foothills Land Trust, Inc.</b> <i>Cave Creek, AZ</i> Support to develop a volunteer program to help manage over 600 acres of preserve land in the Cave Creek and Carefree area of northern Maricopa County.	22,000

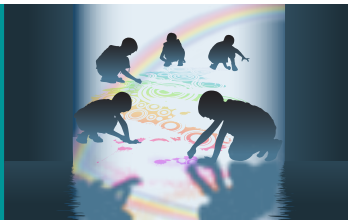
ORGANIZATION NAME GRANT DESCRIPTION	GRANT AWARDED
<b>FACCS-Friends of Animal Care &amp; Control</b> <i>Phoenix, AZ</i> Support for a second year for the Spay/Neuter Assistance Program to provide free rabies vaccinations and spay/neuter surgeries for nearly 1,200 companion animals of low-income residents in central and south Phoenix.	\$62,500
<b>Friends of the White River, Inc.</b> <i>Indianapolis, IN</i> Support for the Partnering to Protect White River Project, an outreach program to protect, preserve and enhance the quality of the White River.	50,000
<b>Grand Canyon Trust</b> <i>Flagstaff, AZ</i> Support for the Four Forests Restoration Initiative, a large-scale effort to renew forest health across 2.4 million acres of the Mogollon Rim, protect fire-prone rural communities and create a forest restoration economy in northern Arizona.	130,000
<b>Healing Hearts Animal Rescue and Refuge</b> <i>Gilbert, AZ</i> Support to expand the mobile surgical veterinary unit's hours of operation to provide 6,000 spay/neuter and other medical procedures for dogs and cats living with caregivers in low-income neighborhoods in Maricopa County.	42,000
<b>Hoosier Environmental Council, Inc.</b> <i>Indianapolis, IN</i> Support for the first year of a three-year program to provide communities with the knowledge and tools to reduce the impact of industrial agricultural practices on Indiana's waterways.	60,000
<b>Improving Kids' Environment</b> <i>Indianapolis, IN</i> Support to assist 25 low-income homeowners in remediating lead paint hazards to make their homes safe for their children.	50,000
<b>Indiana Wildlife Federation, Inc.</b> <i>Zionsville, IN</i> Support to educate homeowners, lawn care service companies and lawn care/fertilizer stores about the threats to Indiana's waterways associated with using phosphorus-enriched fertilizer on lawns.	44,000
<b>IndyFeral, Inc.</b> <i>Indianapolis, IN</i> Support for 3,000 feral cat spay and neuter surgeries in Marion County of which 750 are targeted to low-income neighborhoods in 10 Indianapolis zip codes.	35,000
<b>*Lost Our Home Pet Foundation, Inc.</b> <i>Scottsdale, AZ</i> Support to expand rescue and adoption programs and services for abandoned and displaced dogs and cats in Maricopa County.	38,000

\*Represents first-time grant recipients.

ORGANIZATION NAME GRANT DESCRIPTION	GRANT AWARDED
<p><b>*McDowell Sonoran Conservancy</b> <i>Scottsdale, AZ</i></p> <p>Support for an inventory and assessment of the McDowell Sonoran Preserve's plant and animal life to guide the restoration, conservation and protection of the existing and proposed 36,400-acre preserve in Scottsdale.</p>	\$38,000
<p><b>National Audubon Society</b> <i>New York, NY</i></p> <p>Support for a second year to develop conservation initiatives in Indiana to benefit threatened birds and address water quality issues in urban, rural and agricultural settings.</p>	70,000
<p><b>National Wildlife Federation</b> <i>Boulder, CO</i></p> <p>Support for the Tribal Lands Conservation Program to bring culturally responsive environmental education to 1,200 to 1,800 Native American students and community members living on tribal lands in Arizona.</p>	54,000
<p><b>The Nature Conservancy, Inc. - Indiana Chapter</b> <i>Indianapolis, IN</i></p> <p>Support over two years for the Wabash River Initiative in Indiana.</p>	180,000
<p><b>New Dawn Livestock Rescue &amp; Sanctuary, Inc.</b> <i>Tonopah, AZ</i></p> <p>Support to feed approximately 125 formerly abused or abandoned animals.</p>	20,000

ORGANIZATION NAME GRANT DESCRIPTION	GRANT AWARDED
<p><b>Sky Island Alliance</b> <i>Tucson, AZ</i></p> <p>Support for Conserving the Sky Islands: Adapting to a Changing Climate, a collaborative project to protect the Sky Islands of southern Arizona while creating models to address climate change for application throughout the state.</p>	\$80,000
<p><b>*Southside Animal Shelter, Inc.</b> <i>Indianapolis, IN</i></p> <p>Support for shelter management, volunteer coordination and the adoption of more than 1,500 small rescued animals.</p>	50,000
<p><b>*The Wilderness Society</b> <i>Washington, DC</i></p> <p>Support for the Arizona Wildlands Campaign to protect over 600,000 acres of public lands of the northern Sonoran Desert in western Maricopa County through wilderness and other federal conservation designations.</p>	100,000
<p><b>Employee Appreciation and Recognition Program Grants</b> <i>Indianapolis, IN and Phoenix, AZ</i></p> <p>Support to two organizations whose missions or programs seek to protect animals and nature.</p>	1,000
<p><b>Protecting Animals and Nature</b></p>	<u>\$1,879,500</u>

\*Represents first-time grant recipients.



ORGANIZATION NAME GRANT DESCRIPTION	GRANT AWARDED
<p><b>*Arizona Press Women</b> <i>Paradise Valley, AZ</i></p> <p>Support to publish 100 Years of Arizona Press Women 1912-2012, an anthology of Arizona women writers, journalists, editors and other communicators who made a significant contribution to the state.</p>	\$10,000
<p><b>The Church Federation of Greater Indianapolis, Inc.</b> <i>Indianapolis, IN</i></p> <p>Support to match funds from local churches to build 10 Habitat for Humanity homes in the Martindale-Brightwood area.</p>	100,000
<p><b>*Friends of O'Connor House, Inc.</b> <i>Phoenix, AZ</i></p> <p>Support to develop the O'Connor Process, a model for convening polarized groups, facilitating consensus and developing pragmatic solutions to current societal issues in Arizona.</p>	10,000
<p><b>Friends of Public Radio Arizona</b> <i>Tempe, AZ</i></p> <p>Support for a one-year sponsorship on its NPR station.</p>	30,000
<p><b>Indiana State Museum Foundation, Inc.</b> <i>Indianapolis, IN</i></p> <p>Support for the Abraham Lincoln collection and a traveling exhibition to benefit kindergarten through grade 12 students and teachers.</p>	50,000
<p><b>Indianapolis Civic Theatre</b> <i>Indianapolis, IN</i></p> <p>Support over two years for DramaWorks, an outreach program that offers free arts curriculum to 980 students at IndyMet and Christel House Academy, and to expand the program to Fountain Square Academy and Fall Creek Academy.</p>	60,000

ORGANIZATION NAME GRANT DESCRIPTION	GRANT AWARDED
<p><b>International Center of Indianapolis, Inc.</b> <i>Indianapolis, IN</i></p> <p>Support to start the CityZENship Outreach Program to assist 500 legal immigrants become naturalized U.S. citizens.</p>	\$25,000
<p><b>VSA arts of Indiana, Inc.</b> <i>Indianapolis, IN</i></p> <p>Support to provide arts programming to 9,000 disabled individuals.</p>	50,000
<p><b>WFYI - Metropolitan Indianapolis Public Broadcasting, Inc.</b> <i>Indianapolis, IN</i></p> <p>Support for a one-year sponsorship on its NPR station.</p>	30,000
<b>Enriching Community Life</b>	<u>\$365,000</u>
<b>Helping People In Need</b>	\$8,778,991
<b>Protecting Animals and Nature</b>	\$1,879,500
<b>Enriching Community Life</b>	\$365,000
<b>GRAND TOTAL</b>	<u><u>\$11,023,491</u></u>

\*Represents first-time grant recipients.

# Unaudited Financial Highlights



STEWARDED TODAY'S ASSETS  
FOR TOMORROW'S NEEDS

The accompanying Trust financial summary is unaudited and is subject to change. The audit of the Trust's 2010 financial statements is scheduled for completion in mid-June 2011. We will post the financial statements and auditor's report on the Trust's web site by early July and will announce their availability via *Connections*, the Trust's e-newsletter.

<u>(Amount in thousands)</u>	<u>2010</u>	<u>2009</u>
<b>Total Assets as of December 31</b>	\$ 353,700	\$ 327,400
<b>Financial Activities for the Year ended Dec. 31:</b>		
Investment Income, net of fees	\$ 41,500	\$ 61,000
Grantmaking and Administrative Expenses	(3,800)	(3,800)
Approved Grants and Scholarships	(11,100)	(13,400)
Federal Excise Tax Benefit (expense)	(100)	(300)
Change in Unrestricted Net Assets	26,500	43,500
Unrestricted Net Assets Beginning of Year	323,000	279,500
Unrestricted Net Assets End of Year	<u>\$ 349,500</u>	<u>\$ 323,000</u>

# Nina Mason Pulliam (1906 - 1997) (1906 - 1997)



A LEGACY OF  
CARING AND GIVING

**W**as a journalist, a business leader, a humanitarian and a lover of all creatures.

Nina Mason Pulliam was born in 1906 in rural Martinsville, Indiana, one of seven children. As a high school sophomore, she received her first compensation for a literary essay. She went on to study journalism at Franklin College in Franklin, Indiana, and later attended Indiana University and the University of New Mexico. After college, she took a full-time job at *Farm Life*, a national magazine published in Spencer, Indiana. When the magazine folded during the Depression, she went to work in Lebanon, Indiana, for an ambitious newspaper publisher named Eugene C. Pulliam. They were married in 1941

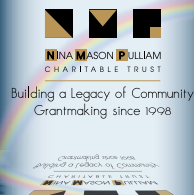
During their marriage, the Pulliams traveled abroad extensively as a husband and wife writing team. They were among the first Americans to visit and write about post-World War II conditions in Europe. Over 11 years, Nina Pulliam was published in newspapers throughout North America, and her articles were compiled into seven books.

Nina Pulliam was the founding secretary-treasurer and a director of Central Newspapers, Inc., which Mr. Pulliam had established in 1934. Upon his death in 1975, she served as president of CNI until 1979 and was publisher of *The Arizona Republic* and *The Phoenix Gazette* until 1978. Gannett Newspapers, Inc. purchased CNI in 2000.

She was the first woman admitted to Sigma Delta Chi, now the Society of Professional Journalists. Mrs. Pulliam also loved flying and was the first woman to earn a private pilot's license in Indiana. She was known for her lifelong love of animals and for her nature conservancy efforts.



Nina Pulliam was a compassionate business and civic leader, devoting many hours to civic, charitable and community work. During her career, she shared her financial success and business leadership skills with many charities in Indianapolis and Phoenix.



<b>EXECUTIVE OFFICE</b>	
<p><b>Harriet M. Ivey</b> President and Chief Executive Officer Indianapolis and Phoenix</p>	<p><b>Rosanne L. Bradley</b> Executive Administrative Assistant Indianapolis</p>
<b>FINANCE AND OPERATIONS</b>	
<p><b>Robert L. Lowry, CPA, CFA</b> Executive Vice President and Chief Financial Officer Indianapolis</p> <p><b>Melissa S. Gesse</b> Controller Indianapolis</p> <p><b>Debbie L. Cramer</b> Accounting and Administration Manager Indianapolis</p>	<p><b>Christine M. Bell</b> Executive Assistant/Office Manager Phoenix</p>
<b>GRANTS PROGRAMS</b>	
<p><b>Michael R. Twyman, Ph.D.</b> Director of Grants Programs Indianapolis</p> <p><b>David A. Hillman, O.D.</b> Program Officer Indianapolis</p> <p><b>Lee Ann Hoy</b> Program Officer Indianapolis</p>	<p><b>Edmund H. Portnoy, Ph.D.</b> Director of Grants Programs Phoenix</p> <p><b>Robert C. Berger</b> Program Officer and Website Administrator Phoenix</p> <p><b>Belen K. Gonzalez, M.S.W.</b> Program Officer Phoenix</p>
<b>GRANTS ADMINISTRATION</b>	
<p><b>Mary K. Price</b> Director of Grants Administration and Secretary to the Board of Trustees Indianapolis</p> <p><b>Gala R. Dynes</b> Grants Administration Associate Indianapolis</p> <p><b>Loraine B. Gilbreath</b> Grants Administration Associate Phoenix</p>	<p><b>Dayna D. Brady</b> Executive Administrative Assistant Indianapolis</p> <p><b>Bensu Kollath</b> Receptionist/Grants Administration Assistant Indianapolis</p>